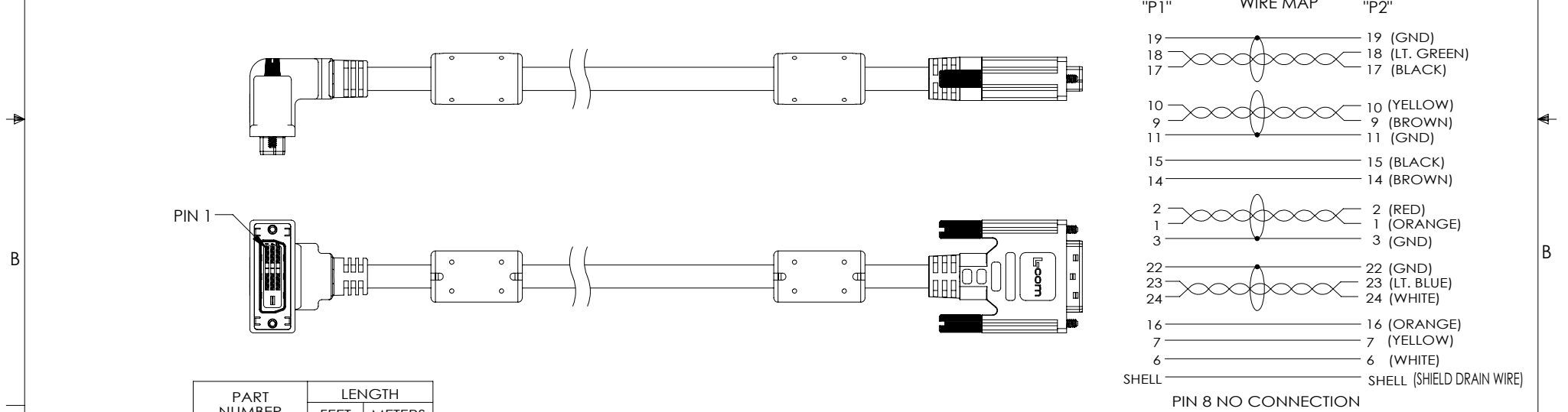
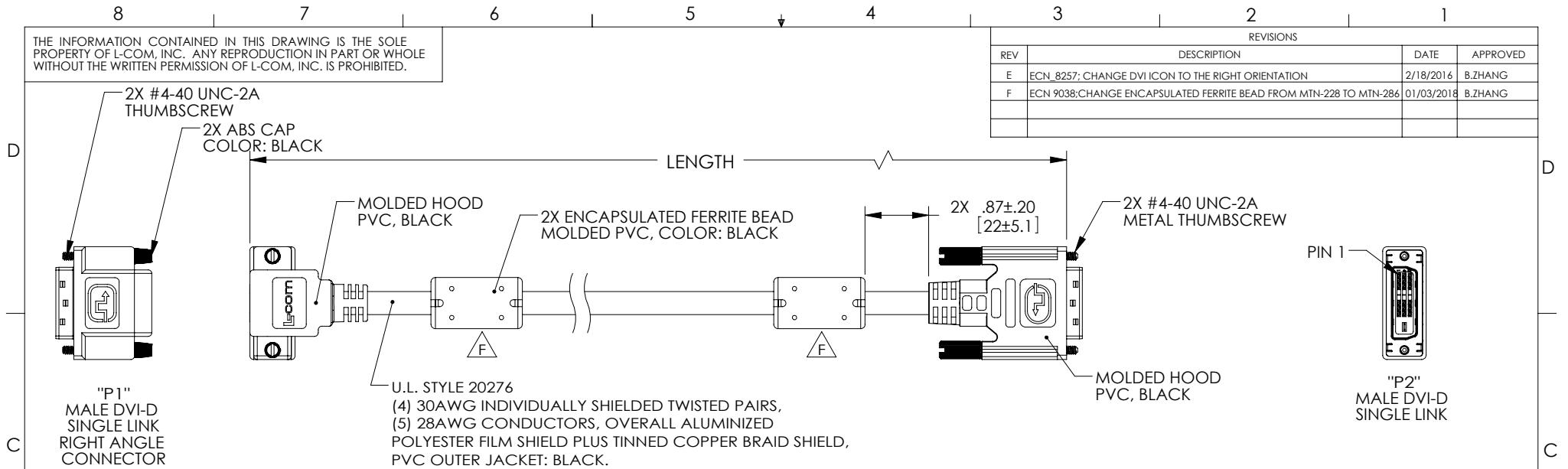


THE INFORMATION CONTAINED IN THIS DRAWING IS THE SOLE PROPERTY OF L-COM, INC. ANY REPRODUCTION IN PART OR WHOLE WITHOUT THE WRITTEN PERMISSION OF L-COM, INC. IS PROHIBITED.

REVISIONS			
REV	DESCRIPTION	DATE	APPROVED
E	ECN 8257; CHANGE DVI ICON TO THE RIGHT ORIENTATION	2/18/2016	B.ZHANG
F	ECN 9038; CHANGE ENCAPSULATED FERRITE BEAD FROM MTN-228 TO MTN-286	01/03/2018	B.ZHANG



PART NUMBER	LENGTH	
	FEET	METERS
DVIDS-RA-1	1.0	[.30]
DVIDS-RA-3	3.0	[.91]
DVIDS-RA-5	5.0	[1.52]
DVIDS-RA-10	10.0	[3.05]
DVIDS-RA-15	15.0	[4.57]

- NOTES:**
- CABLE ASSEMBLY TO BE TESTED FOR CONTINUITY
 - CABLE ASSEMBLY TO BE INDIVIDUALLY PACKAGED IN ACCORDANCE WITH L-COM SPEC. PS-0031.
 - DUST COVERS INSTALLED FOR SHIPPING (NOT SHOWN).

REGULATORY COMPLIANCE:
CE2011/65/EU(RoHS DIRECTIVE)

UNLESS OTHERWISE SPECIFIED, DIMENSIONS ARE IN INCHES [mm] OVERALL CABLE LENGTH TOLERANCE: ≤ 12 [305] = +1 [25] / -0 > 12 [305] ≤ 60 [1524] = +2 [51] / -0 > 60 [1524] ≤ 120 [3048] = +4 [102] / -0 > 120 [3048] ≤ 300 [7620] = +6 [152] / -0 > 300 [7620] = +5% / -0% ALL OTHER DIMENSIONAL TOLERANCES: .X = ±.2 [5.08] .XX = ±.02 [1.51] .XXX = ±.005 [1.13]	APPROVALS DRAWN BY D. CASTRO CHECKED BY D. PARHAM APPROVED BY P. MCNEIL	DATE 2/22/11 2/22/11 2/22/11	45 BEECHWOOD DRIVE NORTH ANDOVER, MA 01845	
	CONFIGURATION DETAILS OF UNDIMENSIONED FEATURES MAY VARY			CATEGORY AUDIO/VIDEO
	PROJECTION 	COLOR VARIATIONS MAY OCCUR	SIZE A	FSCM NO. 43321
	REF	DWG. NO. DVIDS-RA	SCALE: NONE	CAD FILE: DVIDS-RA.SLDDRW
			PRODUCT DESCRIPTION CBL DVI-D SL RA	
			SHEET 1 OF 1	