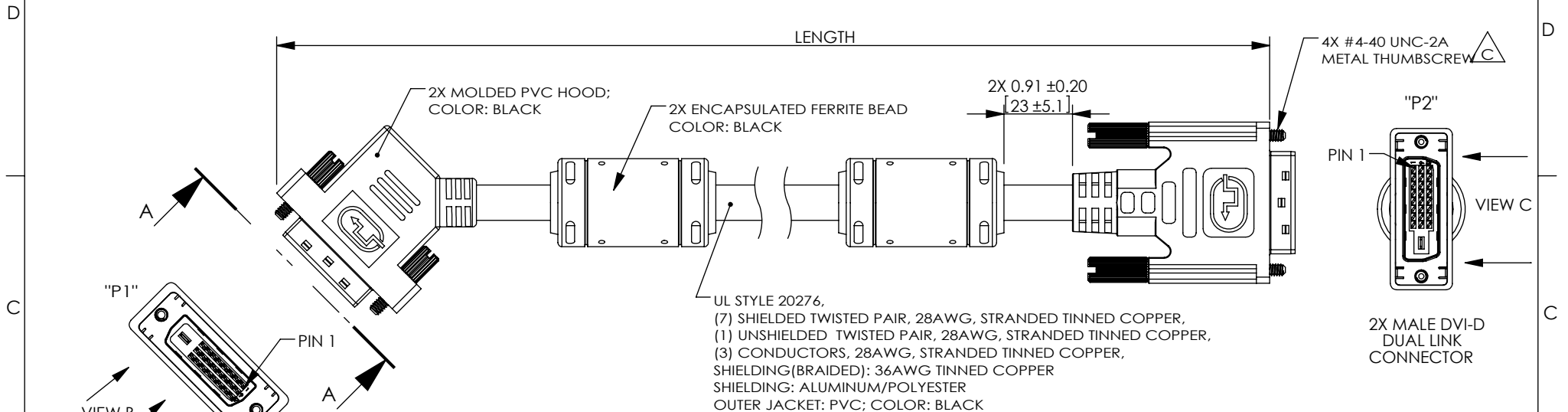
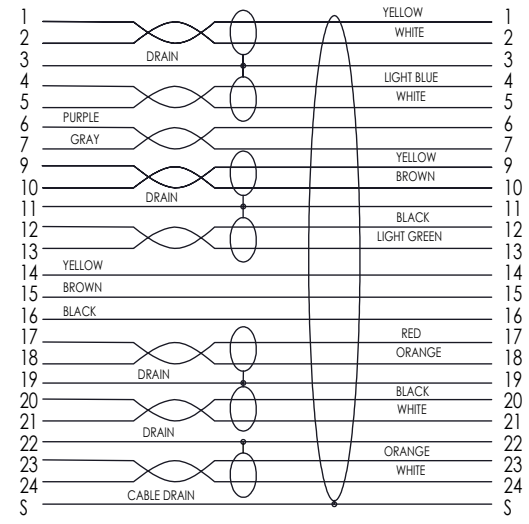


THE INFORMATION CONTAINED IN THIS DRAWING IS THE SOLE PROPERTY OF L-COM, INC. ANY REPRODUCTION IN PART OR WHOLE WITHOUT THE WRITTEN PERMISSION OF L-COM, INC. IS PROHIBITED.

REVISIONS			
REV	DESCRIPTION	DATE	APPROVED
A	INITIAL RELEASE	11/2/11	D.GRIFFIN
B	ECN 5837: ADDED LOGO VIEWS	11/15/11	D. CASTRO
C	ECN 8182: UPT DWG FROM MOLDED THUMBSCREW TO METAL THUMBSCREW	12/9/2015	B.ZHANG



WIRING MAP

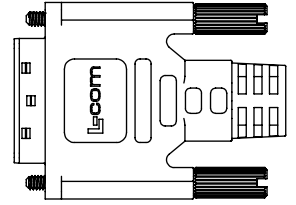
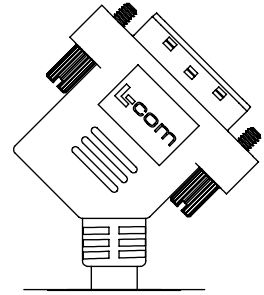


PIN 8: NO CONNECTION

MODEL NUMBER	LENGTH	
	FEET	METERS
DVIDDL-45-1	1.0	.31
DVIDDL-45-3	3.0	.91
DVIDDL-45-5	5.0	1.52
DVIDDL-45-10	10.0	3.05
DVIDDL-45-15	15.0	4.57

- NOTES:**
1. CABLES TO BE TESTED FOR CONTINUITY.
 2. CABLES TO BE INDIVIDUALLY PACKAGED IN ACCORDANCE WITH L-COM SPECIFICATION PS-0031.
 3. DUST COVERS INSTALLED FOR SHIPPING (NOT SHOWN).

REGULATORY COMPLIANCE:
 CE2011/65/EU(RoHS DIRECTIVE)



UNLESS OTHERWISE SPECIFIED, DIMENSIONS ARE IN INCHES [mm] OVERALL CABLE LENGTH TOLERANCE: ≤ 12 [305] = +1 [25] / -0 >12 [305] ≤ 60 [1524] = +2 [51] / -0 >60 [1524] ≤ 120 [3048] = +4 [102] / -0 >120 [3048] ≤ 300 [7620] = +6 [152] / -0 >300 [7620] = +5% / -0%	APPROVALS	DATE		45 BEECHWOOD DRIVE NORTH ANDOVER, MA 01845
	DRAWN BY D.FRISIELLO	10/28/11		CATEGORY
ALL OTHER DIMENSIONAL TOLERANCES: $X = \pm .2$ [5.08] $.XX = \pm .02$ [.51] $.XXX = \pm .005$ [.13]	CHECKED BY R.SCOTT	10/28/11	PRODUCT DESCRIPTION DVI-D STR DL M/M 45 DEG	
APPROVED BY P.McNEIL	10/28/11	CONFIGURATION DETAILS OF UNDIMENSIONED FEATURES MAY VARY		SIZE A
PROJECTION 	COLOR VARIATIONS MAY OCCUR	REF	DWG. NO. DVIDDL-45	REV. C
			SCALE: NONE	CAD FILE: DVIDDL-45.SLDRW
				SHEET 1 OF 1